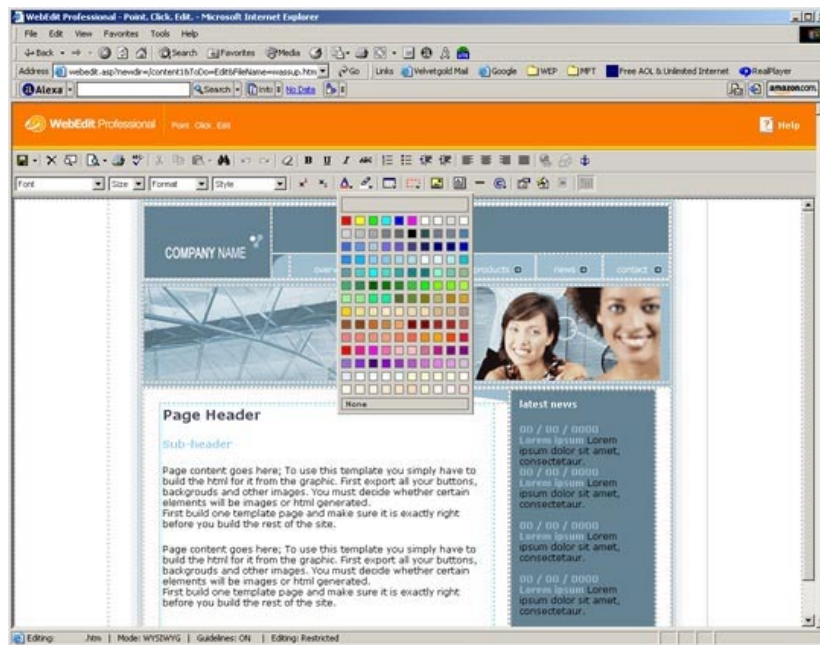


# WebEdit Professional v5.0

## Installation and Developer Guide

[www.interspire.com/webedit](http://www.interspire.com/webedit)

Release Date – 01 May 2004



## PHP – Installation and Developer Guide

### Table of Contents

INTRODUCTION .....	3
SERVER COMPATIBILITY .....	5
CLIENT REQUIREMENTS .....	5
INSTALLATION OVERVIEW.....	5
INSTALLATION PROCESS .....	6
STEP 1. MODIFY "CONFIG.PHP" .....	6
REQUIRED SETTINGS .....	6
ADVANCED SETTINGS.....	8
STEP 2. UPLOADING FILES TO YOUR WEB SERVER .....	11
STEP 3. SETTING PERMISSIONS.....	12
PERMISSIONS: .....	12
STEP 4. RUN WEBEDIT PRO FROM YOUR WEB BROWSER.....	13
INSTALLATION AND RUNNING PROBLEMS .....	14
GENERAL TROUBLESHOOTING .....	15
PERSONALIZING (REBRANDING) WEBEDIT PROFESSIONAL.....	16
MODIFYING, ADDING OR REMOVING TEMPLATES.....	17
ADVANCED USERS – TIPS AND TRICKS.....	18
MODIFYING THE TOOLBAR .....	18
WEB CONTENT MANAGEMENT FEATURES.....	18
MORE INFORMATION.....	21
CONCLUSION .....	21

## INTRODUCTION

Copyright © 2001-2004 Interspire - All Rights Reserved

THIS COPYRIGHT INFORMATION MUST REMAIN INTACT AND MAY NOT BE MODIFIED IN ANY WAY

When you purchased this script you agreed to accept the terms of this Agreement. This Agreement is a legal contract, which specifies the terms of the license and warranty limitation between you and 'Interspire'. You should carefully read the following terms and conditions before installing or using this software.

Unless you have a different license agreement obtained from 'WebEdPro.com' or 'Interspire', installation or use of this software indicates your acceptance of the license and warranty limitation terms contained in this Agreement.

If you do not agree to the terms of this Agreement in it's entirety, promptly delete & destroy all copies of the Software.

### **Versions of the Software**

Only one licensed copy of WebEdit Pro may be used on one web site domain. This is based on a per domain licensing scheme.

### **License to Redistribute**

Distributing the software and/or documentation with other products (commercial or otherwise) by any means without prior written permission from 'WebEdPro.com' or 'Interspire' is forbidden. All rights to the WebEdit Pro software and documentation not expressly granted under this Agreement are reserved to 'Interspire'.

### **Disclaimer of Warranty**

THIS SOFTWARE AND ACCOMPANYING DOCUMENTATION ARE PROVIDED "AS IS" AND WITHOUT WARRANTIES AS TO PERFORMANCE OF MERCHANTABILITY OR ANY OTHER WARRANTIES WHETHER EXPRESSED OR IMPLIED. BECAUSE OF THE VARIOUS HARDWARE AND SOFTWARE ENVIRONMENTS INTO WHICH WEBEDIT PRO MAY BE USED, NO WARRANTY OF FITNESS FOR A PARTICULAR PURPOSE IS OFFERED. THE USER MUST ASSUME THE ENTIRE RISK OF USING THIS PROGRAM. ANY LIABILITY OF 'INTERSPIRE' WILL BE LIMITED EXCLUSIVELY TO PRODUCT REPLACEMENT OR REFUND OF PURCHASE PRICE. IN NO CASE SHALL 'WEBEDPRO.COM' OR 'INTERSPIRE' BE LIABLE FOR ANY INCIDENTAL, SPECIAL OR CONSEQUENTIAL DAMAGES OR LOSS, INCLUDING, WITHOUT LIMITATION, LOST PROFITS OR THE INABILITY TO USE EQUIPMENT OR ACCESS DATA, WHETHER SUCH DAMAGES ARE BASED UPON A BREACH OF EXPRESS OR IMPLIED WARRANTIES, BREACH OF CONTRACT, NEGLIGENCE, STRICT TORT, OR ANY OTHER LEGAL THEORY.

THIS IS TRUE EVEN IF 'WEBEDPRO.COM' OR 'INTERSPIRE' IS ADVISED OF THE POSSIBILITY OF SUCH DAMAGES. IN NO CASE WILL 'WEBEDPRO.COM' OR 'INTERSPIRE'S LIABILITY EXCEED THE AMOUNT OF THE LICENSE FEE ACTUALLY PAID BY LICENSEE TO 'WEBEDPRO.COM' OR 'INTERSPIRE'.

Warning: This program is protected by copyright law. Unauthorized reproduction or distribution of this program, or any portion of it, may result in severe civil and criminal penalties, and will be prosecuted to the maximum extent possible under the law.

### **Credits:**

Eddie Machaalani - Concept, Designer, Programmer  
Oleg Kokotovic - Logic Design

For more information about this script or other scripts see <http://www.interspire.com>

Thank you for purchasing our script.

If you have any suggestions or ideas please direct them to [webedit@interspire.com](mailto:webedit@interspire.com)

## SERVER COMPATIBILITY

WebEdit Pro will work on most Unix / Linux platforms. The PHP version has not been tested under Windows and is meant for Unix variants. A PERL version is also available for Unix / Linux platforms. An ASP version is available for Windows hosting platforms.

For more information please visit <http://www.interspire.com/webedit>.

- \* Web Server running Apache (1.3.2 or higher)
- \* PHP v4.1.0 or above (preferably not a pre-release)
- \* safe\_mode turned off (default)
- \* open\_basedir turned off (default)

## CLIENT REQUIREMENTS

To create, edit or maintain your web site using WebEdit Pro, you **MUST** be on a PC (not a Macintosh) and have Internet Explorer version 5.5 or above.

If you don't have a current version of Internet Explorer, you can download it free from Microsoft:  
<http://microsoft.com/windows/ie/default.htm>

Keep in mind that you **DON'T** need this browser to visit and **SEE** your site, anyone can see it!  
You just need this browser to edit it.

## INSTALLATION OVERVIEW

Setting up WebEdit Pro requires knowledge using FTP and setting server permissions (chmod). Previous experience setting up PHP scripts is an advantage.

Your web host must support PHP scripts and must allow you to change permissions on your host account using FTP, SSH or telnet. To edit in your root directory, you must be able to set the permissions on the root directory – if you cannot, you will need to edit and run the website from a sub directory.

Basic configuration is done by modifying the "config.php" script included in the WebEdit Pro package.

These instructions assume you have the complete WebEdit package, and that you have an FTP client that will connect you with your web server account.

## INSTALLATION PROCESS

### STEP 1. MODIFY "CONFIG.PHP"

Unzip the WebEdit package onto your local hard drive. Using a simple text editor such as notepad, open the config.php file that was located in the package.

- Do not edit following line: (simply skip this line and go to the user lines)

**\$users = array(**

### REQUIRED SETTINGS

- Modify the following lines, firstly configuring the users.  
The configuration below is on a per-user basis:

```

user1 => array("pass1", "/content1", "/images1", "dir1,dir2,dir3"),
user2 => array("pass2", "/content2", "/images2", "dir1"),
user3 => array("pass3", "/content3", "/images3", ""),
user4 => array("pass4", "/content4", "/images5", ""),
user5 => array("pass5", "/content5", "/images4", "")
    
```

-> Each row represents the critical resources for one user in the following order: username, password, starting directory, image directory and directory excludes.

Modify these values for each user, reflecting their correct information. Please take care to preserve the formatting specified in this file - ensure that all brackets, commas quotes and spacing remains as is, or WebEdit Professional may not run correctly. Delete any users that are not required.(Simply delete non required lines).  
Use only alphanumeric characters ie. A-Z, a-z, 0-9.

Below is a description of each resource and how it is configured:

```

user1 => array("pass1", "/content1", "/images1", "dir1,dir2,dir3"),
    ie. username => ["password", "Starting Directory", "Image Directory", "Hidden Directories"]
    
```

#### **user1 - the username**

-> Replace this text with the login names for each of your users. If only 1 user is required, remove all additional entries (i.e. Delete each non required line)

#### **"pass1" - the password**

-> Replace the text inside the quotation marks i.e. pass1 with a password corresponding to the user in that line. i.e. user1.

#### **"/content1" - the starting directory**

-> Replace the text inside the quotation marks i.e. /content1, with the location of the directory where your files reside. This can be any directory accessible from the web. The path you place in this field is relative to the Document Root of your web server.

Please note that capitalisation is VERY important in specifying this information (i.e. /content is NOT same as /CONTENT, nor /Content).

WebEdit Pro will allow the specified user to browse through directories under this directory and edit files in any directory below your starting directory (except those in hidden directories - look below).

#### **"/images1" - the users image directory**

-> Replace the text in the quotation marks i.e. /images1, with the location of the directory where images for this specific user reside. This can be any directory accessible from the web. The path you place in this field is relative to the Document Root of your web server.

Please note that capitalisation is VERY important in specifying this information (i.e. /images is NOT same as /IMAGES, nor /Images).

WebEdit Pro will allow specified user to browse through directories under this directory and insert, rename delete images in any directory below the image directory.

#### **"dir1,dir2,dir3" - the hidden directories**

-> Replace (or add to) these values with directories/folders that you do not want displayed in the file/image browser for the specified user. There can be any number of directories listed, delimited by commas.

Directories should be separated with comma's and are NOT paths, just directory names  
' (eg. "directory1, directory2, directory3")

### **IMPORTANT**

Please note that capitalisation is VERY important in specifying this information (i.e. /content is NOT same as /CONTENT, nor /Content).

#### **\$TemplateDirectory = "/webedit/webedit\_templates";**

-> Replace this with the location of the directory where your templates reside. This can be any directory accessible from the web. The path you specify in this field is relative to the Document Root of your web server. Generally, this will be in the same location as your 'webedit.php' file. You may upload, delete or edit any files within this directory to allow creation of files based on any template in this directory.

#### **\$InvoiceNumber = "INVOICE";**

-> Replace this field with the Invoice number supplied to you upon your purchase. This is a REQUIRED field and your installation will not function correctly without this. Please make SURE to include the 'WEP' at the beginning of your invoice number.

#### **\$Email = "email@yourdomain.com";**

->Include the email address used when placing your purchase  
This is a REQUIRED field and your install will not function correctly without this.

## ADVANCED SETTINGS

The options below should only be used if you have installed WebEdit Professional and all is running smoothly. Please back up & keep a copy of your config.php file before changing any details below.

### **\$maxfilesize = 60720;**

-> Replace this with the maximum size of standard files to upload, in bytes. Standard files are files with extension(s) specified under FileType in your 'config.php'. As a general rule – 3000 bytes = 3kb, 30000 bytes = 30kb, 300000 = 300 kb, 3000000 = 3000kb = 3mb

### **\$maximagesize = 60720;**

-> Replace this value with the maximum size of image files to upload, in bytes. Image files are files with extension(s) specified under ImageFileType in your 'config.php'. As a general rule - 3000 bytes = 3kb, 30000 bytes = 30kb, 300000 = 300 kb, 3000000 = 3000kb = 3mb

### **\$FileType = Array("htm","txt","html");**

-> Replace these values with extensions of files you want to view/modify with WebEdit Pro. You can add any number of file extensions here, and remove any that are not appropriate for your site. HOWEVER, if you want to use the templates provided with your copy of WebEdit Pro, you must leave "html" in the FileTypes or rename the templates to have the same extension as one you have specified above.

### **\$NonEditableFileType = Array("pdf","bmp");**

-> Replace these values with extensions of files you want to be able to upload, rename and delete with WebEdit Pro. These files cannot be viewed or edited in the editor, however. You can add any number of file extensions here, and remove any that are not appropriate for your site.

### **\$LinkType = Array("html","htm","txt","jpg","gif","pdf","doc","xls");**

-> File extensions recognised by WebEdit Pro that will allow linking to these files in the Link Manager.

### **\$ImageFileType = Array("jpg", "gif");**

-> Replace these values with extensions of image files you want use with WebEdit Pro. You can add any number of file extensions here, and remove any that are not appropriate for your site.

### **\$FileTypeInclude = "inc";**

-> Replace this value with the extension of files that are include files (i.e. files that do NOT contain <HTML>, <HEAD> or <BODY> tags). WebEdit Pro will read and allow the editing as include files (will NOT allow modifying <BODY>, <TITLE> etc properties) because the file does NOT have a body tag. Your FileTypeInclude should also exist in your FileType.

### **\$DefaultFileExtension = "";**

-> Setting this will add a default file extension when the user creates a New file from the File Manager. The preceding '.' is required. eg: ".html"  
If you would like the user to add their OWN file extension, simply keep this blank.

### **\$TableBordersOnByDefault = 1;**

-> This value controls the initial behaviour of the editor in showing table borders. The only accepted values are 0 & 1 - 0 for turning the function off and 1 for switching the function on.

**\$RestrictedEditing = 0;**

-> Restrict editing to only sections of HTML page defined by web developer. 0 = off, 1 = on  
Editable sections can be defined by surrounding editable content with  
<!-- #BeginEditable "name\_of\_editable\_region" -->Content<!-- #EndEditable -->  
For more information, please read the expanded guide in the advanced users section of this document.

**\$OutputXHTML = 0;**

-> Set to 1 if you would like to save HTML files in XHTML format.  
Set to 0 to save as normal HTML.

**\$SingleLineReturn = 1;**

-> Set to 1 if you would like the editor to insert a <BR> tag rather than a <P> tag when the user presses enter. Set to 0 to use default <P> tags when user presses enter

**\$SpellCheckLanguage = "american";**

-> Set the language dictionary you would like to use when checking spelling.  
american, british, canadian, french, spanish, german, italian, portuguese, dutch, norwegian, swedish or danish

**\$AbsolutePaths = 1;**

-> Set to 1 if you would like to save HTML with src and href to absolute paths eg:  
/webedit/image.gif Set to 0 to use complete paths eg:  
http://www.domain.com/webedit/image.gif - will not affect external links.

**\$AllowCreate = 1;**

-> Allow the creation of new files, 0 = no, 1 = yes

**\$AllowCreateFolder = 1;**

-> Allow the creation of new folders in the FileManager, 0 = no, 1 = yes

**\$AllowCreateImageFolder = 1;**

-> Allow the creation of new folders in the Image Manager, 0 = no, 1 = yes

**\$AllowDelete = 1;**

-> Allow the deletion of files and folders from the File Manager, 0 = no, 1 = yes

**\$AllowDeleteImage = 1;**

-> Allow the deletion of images and image folders from the Image Manager, 0 = no, 1 = yes

**\$AllowRename = 1;**

-> Allow users to rename files and folders in File Manager, 0 = no, 1 = yes

**\$AllowRenameImage = 1;**

-> Allow users to rename images and folders in Image Manager, 0 = no, 1 = yes

**\$AllowCopy = 1;**

-> Allow users to copy files in File Manager, 0 = no, 1 = yes

**\$AllowCopyImage = 1;**

-> Allow users to copy files in Image Manager, 0 = no, 1 = yes

**\$AllowUpload = 1;**

-> Allow users to upload files in File Manager 0 = no, 1 = yes

**\$AllowUploadImage = 1;**

-> Allow users to upload images in Image Manager 0 = no, 1 = yes

**\$DocRootOverride = "";**

-> This value is to be left blank, unless otherwise specified by the WebEdit Professional support team. This is usually used when your web server is reporting an incorrect document root or is reporting a document root that is a softlink rather than the correct path.

**\$AltScriptName = "";**

-> Only to be used if specified by WebEdit Professional support staff. Used when the server is reporting an incorrect Script name. Accessing WebEdit Pro may result in the web server accessing the CGI-PHP or other related errors. Setting the AltScript name, eg: "/webedit/webedit.php" can usually fix these errors.

**\$AltURL = "";**

-> Only to be used if specified by WebEdit Professional support staff. Sometimes your domain may have multiple 'access points' such as http://domain.com or http://www.domain.com Setting the AltURL to the domain you wish to use can remove errors that can get caused when your server reports http://domain.com but you are accessing as http://www.domain.com.  
AltUrl eg: "www.domain.com"

**\$LicenseKey = "";**

-> This value is where you would enter the license key provided by the WebEdit Professional support staff, if you have purchased additional user licenses. The value is left blank by default, indicating that 5 users are allowed in this installation.

## STEP 2. UPLOADING FILES TO YOUR WEB SERVER

- Using your FTP Client, upload the 'webedit.php' and 'config.php' files in TEXT or ASCII mode. This is very important, otherwise your script may not function correctly. You can place these files in any directory on your web server that is viewable from the web and accessible by yourself. This directory must also have permission to execute PHP scripts (files with a '.php' extension). It is not mandatory that you place this file in the same directory as your editable files, templates or images.
- Upload the entire 'webedit\_images' directory (and all images inside this directory) in BINARY mode into the SAME directory as 'webedit.php' on the server.
- Upload the entire 'webedit\_includes' directory (and all files inside this directory) in TEXT or ASCII mode into the SAME directory as 'webedit.php' on the server.
- Upload the entire 'webedit\_templates' directory in TEXT or ASCII mode to any web visible location on your web server. This location must match the 'TemplateDirectory' you previously specified in your 'config.php' and must include the name of the directory i.e. '/path\_to/webedit\_templates'

NB – It is good practise to make a separate folder for the webedit installation alone – especially if you have other scripts running in the same hosting space. Usually our technical team will make a folder inside the site root called 'webedit' and place all installation files in this directory.

### IMPORTANT

1. Make sure you upload text and script files using TEXT or ASCII mode, otherwise your script will fail to run. All images must be uploaded in BINARY mode.
2. Upload the complete 'webedit\_images' directory to the same location as your script. Also upload the 'webedit\_includes' directory to the same location as your script. Therefore there should now be your 'webedit.php' script, 'config.php' configuration file and two directories: 'webedit\_images' and 'webedit\_includes'. The directory names must NOT be changed, otherwise the script will not locate the resources it requires.
3. The above mentioned image directory is for internal use by the script and not the location to place images that you wish to use on your web site.

### STEP 3. SETTING PERMISSIONS

- Using your FTP client, you will need to change permissions on the WebEdit files and directories as specified below. (this is usually found by right clicking the file / folder in your FTP client and clicking on FTP options, then CHMOD). Consult your FTP client software if you cannot locate the CHMOD command. If you do not have access to set permissions you should ask your hosting provider.

#### PERMISSIONS:

**webedit.php: 755**

(Owner: Read, Write and Execute; Group: Read and Execute; Other: Read and Execute)

**config.php: 644**

(Owner: Read and Write; Group: Read; Other: Read)

**content directory (and all sub-directories you want accessible): 757**

(Owner: Read, Write and Execute; Group: Read and Execute; Other: Read, Write and Execute)

**all files inside the content directory: 646**

(Owner: Read and Write; Group: Read; Other: Read and Write)

**webedit\_images: 755**

(Owner: Read, Write and Execute; Group: Read and Execute; Other: Read and Execute)

**all images inside the 'webedit\_images' directory: 646**

(Owner: Read and Write; Group: Read; Other: Read and Write)

**webedit\_includes: 755**

(Owner: Read, Write and Execute; Group: Read and Execute; Other: Read and Execute)

**all files inside the 'webedit\_includes' directory: 644**

(Owner: Read and Write; Group: Read; Other: Read)

**images directory (and all sub-directories you want accessible): 757**

(Owner: Read, Write and Execute; Group: Read and Execute; Other: Read and Execute)

**all images inside the images directory: 644**

(Owner: Read and Write; Group: Read; Other: Read)

**templates directory: 755**

(Owner: Read, Write and Execute; Group: Read and Execute; Other: Read and Execute)

**all files inside the templates directory: 644**

(Owner: Read and Write; Group: Read; Other: Read)

#### NOTE

1. For added security (ADVANCED users only and NOT supported by Interspire), you may want to add a '.htaccess' file in the same directory where your 'webedit.php' and 'config.php' reside. Please consult your web server documentation for more information. Alternatively, search the web for more information on '.htaccess' files: <http://www.google.com/search?q=htaccess>

#### **STEP 4. RUN WEBEDIT PRO FROM YOUR WEB BROWSER**

Using your web browser, visit your web site URL where the executable file 'webedit.php' is located:  
e.g.. <http://www.webedpro.com/webedit.php>

This should take you to the login screen. Using the username and password you specified in Step 1, login to WebEdit Pro and manage away!

## INSTALLATION AND RUNNING PROBLEMS

If you are receiving script errors, make sure you have uploaded the script using TEXT or ASCII format. Make sure you have set the correct permissions on your directories & that you can run PHP files.

Also make sure that the path information is correct (i.e. StartingDirectory and ImageDirectory for each user, TemplateDirectory, FileType, FileTypeInclude and ImageFileType). If you are still having problems running the script, or are getting 'Permission denied' errors, contact your system administrator and ask them if you are able to run PHP scripts from the directory where your files are located and if the correct permissions have been set.

If you are having problems logging in, ensure that the username and password have been given the desired values. Make sure your "Caps Lock" key is not pressed.

If you cannot see any of your files after logging in, check to see that the content directory you have specified in the config.php script is correct, that it contains files to edit, and that you have specified a correct file type for WebEdit Pro to find.

If you are receiving client errors, i.e. cannot edit text or are getting JavaScript errors, make sure you are using Internet Explorer version 5.5 or above.

If you are getting broken image links in the WebEdit Pro pages, make sure that 'webedit\_images' directory is in the same location as your executable file.

## GENERAL TROUBLESHOOTING

This trouble shooting section is intended as a general framework for working through problems you may encounter with a PHP installation. It is not a complete guide to every problem that you may encounter, nor is it a tutorial on bug fixing. Most problems are server specific or could have been encountered before so please be sure to look at the WebEdit Pro forum.

### SCRIPT NOT RUNNING – SERVER ERRORS

#### **I receive a "Zero Sized Reply" error.**

Make sure that the webedit\_includes directory was uploaded into the same location as the script.

### PROGRAM IS RUNNING, BUT HAS PROBLEMS

#### **I cant seem to get file uploads to work!**

It keeps telling me: "Please select a file to upload.(No Greater than 30720bytes)".

Seems like your WebHost provider or your web server has PHP set to disallow PHP Uploads. Change, or get your systems administrator to change the following line in your PHP.INI file: file\_uploads = Off to file\_uploads = On

#### **I can't upload files or create directories.**

WebEdit Professional was designed to run on a Linux server with at least PHP 4.1. By default, PHP's safe mode is turned on, however if you're running WebEdit Pro on a remote server i.e. a web host, then it must be turned off. To disable it, you'll need to modify your PHP INI file and change the safe\_mode variable from safe\_mode = on to safe\_mode = off. Also, the open\_basedir value in your PHP INI file shouldn't be set. When you upload an image, it is stored in the folder specified in the INI file by the upload\_tmp\_dir, and if upload\_tmp\_dir is above the directory specified by open\_basedir, then you won't have access to it, thus PHP will complain and not allow your file to be saved into another directory.

For all unanswered questions please view the forum at <http://www.interspire.com/webedit>

## PERSONALIZING (REBRANDING) WEBEDIT PROFESSIONAL

Enhance your image and offer WebEdit professional as your own solution by personalising WebEdit professional with your own branding.

In order to personalize/rebrand your version of WebEdit Pro, you will need to modify the following files contained in the 'webedit\_includes' directory:

**'webedit\_styles.css'** - style sheet for the WebEdit Pro pages.

Simply open this file in a stylesheet editor and edit the classes directly. There are no dynamic or external styles to worry about.

**'pageheader.html'** - header content of each WebEdit Professional page.

A html page that is used as an include at the top of the editor. Simply open and edit as you would any html page. Change or add your own images into the webedit\_images directory and associate with this file.

**'pagefooter.html'** - footer content of each WebEdit Pro page.

The html page that is called for the base of every page in the editor. Add your own footer links, support email links etc. in this file.

### IMPORTANT

1. It is VERY important to make backups of the stylesheet and page header and footer files, if you are editing them. This will ensure that if you have made a mistake, you can always revert back to the original versions of those files and start your customisation again.

## **MODIFYING, ADDING OR REMOVING TEMPLATES**

Templates in Webedit Professional are normal html files that are used to create new files from. This allows you to keep your site design consistent when creating new content pages.

To modify a template, you must first download the html file and modify it with your preferred html editor. Then simply upload it back into the templates directory specified in your config file.

To add a new template, simply upload your html template file into the Template Directory specified in your config file (Step 1 of this document)

To remove a template, delete the template file from the Template Directory specified in your config.

The preview template feature allows your users to preview the templates before they choose, to allow increased productivity and ease of use.

### **IMPORTANT**

1. Make sure that all external resources (such as images and stylesheets) have full URL references in your template files i.e. ``  
Templates relying on relative paths to resources will have broken images when saved in a different directory unless full URL references are used.

You may also use the 'document root linking' for all images ie. ``.

Absolute URLs (document root linking) allows you to make a link relative to the site root so that no matter where in the site your file is, the links within that file will remain relative to the site root.

## ADVANCED USERS – TIPS AND TRICKS

For more tips and tricks, please view our forum on the website – <http://www.interspire.com/forum>

### MODIFYING THE TOOLBAR

To perform modifications to your toolbar you need to modify the file – toolbar.inc in the webedit\_templates directory.

Modifying/Deleting buttons (eg. Image button)

Open the toolbar.inc file and look for the button you wish to edit. In this case we will use the image button as an example. We wish to edit the toolbar to disallow the use of images, so we look for webedit\_images/button\_image.gif in the code.

Then it is just a matter of either commenting the button out or deleting the image and moving all the other images up one cell to accommodate for the lost space.

Adding additional fonts in the font drop down list.

To add more fonts to the list simply open up your toolbar.inc file and search for <option selected>Font</option> and a list of fonts following this code.

To add your own fonts simply copy a line of existing code, paste on a new line and insert the font you require. NB. It must be a browser compliant font face. You can do the same for the sizes as well.

## WEB CONTENT MANAGEMENT FEATURES

### Maintaining Your Design and Layout

WebEdit Professional has a number of features that allow you, the developer, to maintain your website design and layout, whilst allowing end users / clients to update their own website.

Restricted Editing Mode can be turned on to disallow end users to edit any section of the web page being edited, except for regions that you specify. (See below)

Restricted Editing is also automatically turned on for pages being edited that contain regions that you have specified to be editable. (See below)

Specifying Editable Regions

Editable Regions can be specified by surrounding the sections of the web page that you would like to allow editing to, with:

```
<!-- #BeginEditable "Comments" -->
EDITABLE CONTENT
<!-- #EndEditable -->
```

You can also use:

```
<!-- InstanceBeginEditable name="Comments" -->
EDITABLE CONTENT
<!-- InstanceEndEditable -->
```

Note that the comments field will create a tool tip with that comment for the end user when they place their mouse cursor over the editable region.

There is NO difference in either method above, so the choice is yours as to which comment types you would like to use.

### **Macromedia Dreamweaver(TM) Style Templates**

Users familiar with Macromedia Dreamweaver, will notice that the above comment tags are consistent with the way Macromedia Dreamweaver creates its editable regions for files based on a Macromedia Dreamweaver Template. This allows you to create web pages based on Dreamweaver Templates which will be automatically editable within WebEdit Professional with the same Editable Regions defined. Pages edited with WebEdit Professional, can also be re-edited using Macromedia Dreamweaver, with all Editable Regions still intact.

Note: '#BeginEditable' is the Comment style Macromedia Dreamweaver uses before Dreamweaver MX and 'InstanceBeginEditable' is the comment style currently used in Macromedia Dreamweaver MX.

Using SSI and PHP Include tags

Using SSI Tags and PHP Include Tags in WebEdit Professional are a breeze. A page that is using SSI and or PHP includes however, must be restricted. i.e. It must contain regions that are editable, and the SSI and or PHP include tags must be outside these editable regions.

Once a file being edited contains an SSI or PHP include tag, the file being included WILL show up in the editor. However, upon saving the file, ONLY the Editable Regions will be saved back into the original file, maintaining your SSI and or PHP include tags.

Example of a page with SSI include tags and Editable Regions that can be maintained in WebEdit Professional:

```
<!-- #include file="header.html" -->
<body>
<!-- #BeginEditable "Body can be edited" -->
Editable content
<!-- #EndEditable -->
</body>
<!-- #include file="footer.html" -->
```

### **Using Server Side Code in your pages**

Similar to the SSI and PHP tags above, this requires that pages that contain server side code MUST contain editable regions and that the server side code is outside these editable regions. Once a file being edited contains server side code, the server side code WILL be parsed, and run. However, once the file is saved, only the Editable Regions will be saved back into the original file, maintaining your server side code.

Example of a page with Server Side Code (PHP) and Editable Regions:

```
<?php echo("Hello World"); ?>

<html>
<head>
</head>
<body>
```

```
<!-- #BeginEditable "Body can be edited" -->
Editable content
<!-- #EndEditable -->
```

```
<?php
    echo("Hello again, world!");
?>
</body>
</html>
```

### Hidden Class Styles

The style dropdown box contains all the styles within your stylesheet. Webedit Pro automatically inserts these styles when you open the page in the editor, to allow them to be reused. If you wish to use styles that will not be automatically picked up by the editor and that do not require client interaction simply name the style name with a 'wep\_' prefix. (See code below) Eg. The format for a hidden style is as follows - wep\_classname.

```
<html>
<head>
<title>Untitled Document</title>
<meta http-equiv="Content-Type" content="text/html; charset=iso-8859-1">
<style type="text/css">
<!--
.wep_normal {
    font-family: Verdana, Arial, Helvetica, sans-serif;
    font-size: 11px;
}
-->
</style>
</head>

<body class="wep_normal">
Content Here
</body>
</html>
```

### Using the editor on a Secure Server (SSL)

To use SSL (secure sockets layer) encryption with the editor you should simply access the editor with your https://domainname rather than the usual http://domainname. Your certificate must be current and valid to allow access to this function.

## MORE INFORMATION

For the latest information regarding WebEdit Professional, please visit our website:

<http://www.interspire.com/webedit>

and our company website:

<http://www.interspire.com>

## CONCLUSION

Thank you for your purchase of WebEdit Professional. We hope that it increases your productivity and we look forward to hearing great stories of your success.

If you have a comment or suggestion, please don't hesitate to share it with the rest of the WebEdit Professional community on the WebEdit Pro forum.

<http://www.interspire.com/forum>

This forum is constantly being updated with questions and answers as well as the latest tips and tricks on how to optimise WebEdit Professional. If you have any problems, please post it on the forum to allow others to see the answers to common questions.